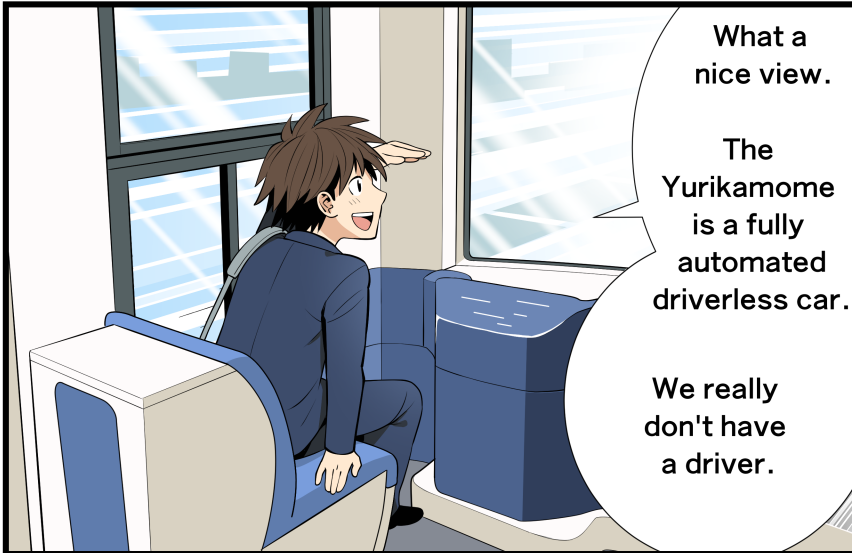


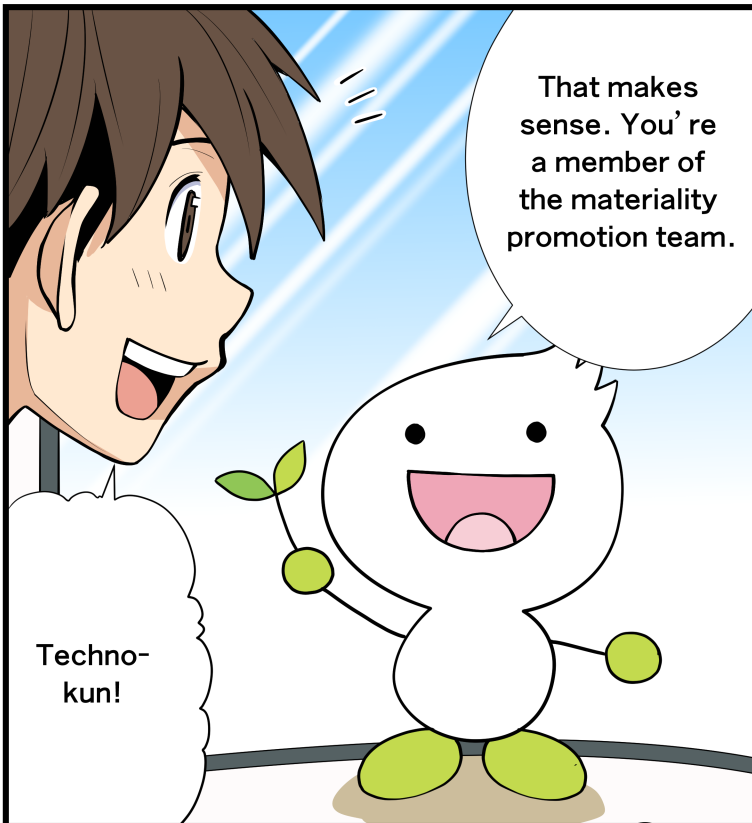
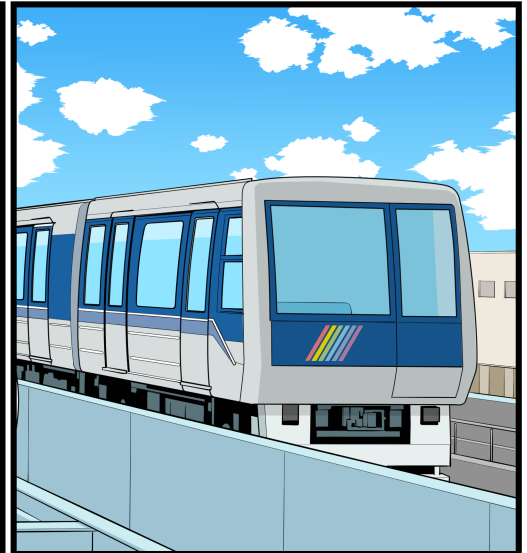
# AI and Digitalization …Realizing a yet unseen, exciting new society through technological innovation



What a nice view.

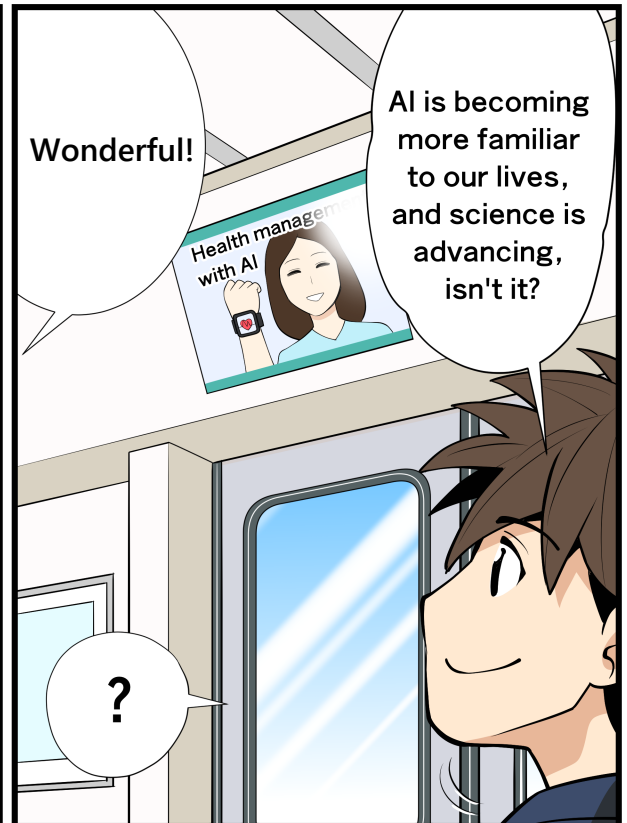
The Yurikamome is a fully automated driverless car.

We really don't have a driver.



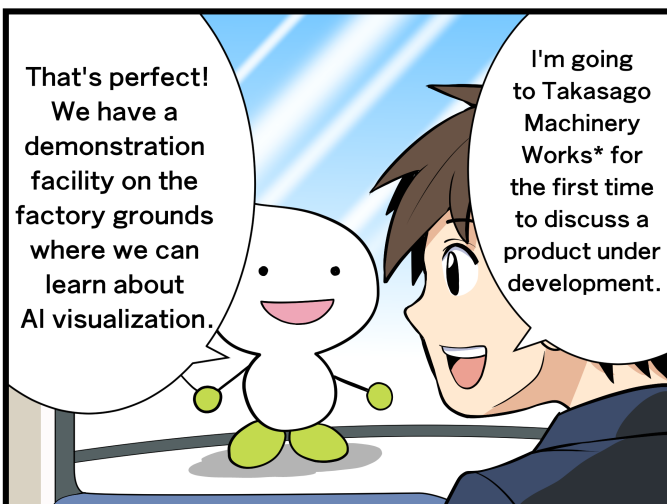
That makes sense. You're a member of the materiality promotion team.

Techno-kun!



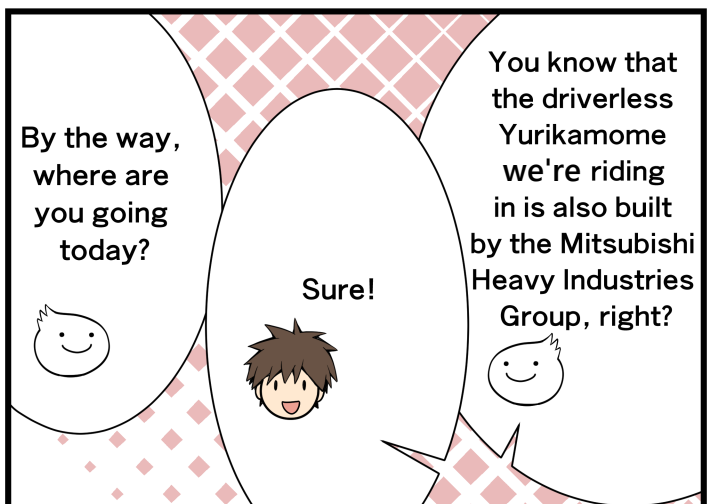
Wonderful!

AI is becoming more familiar to our lives, and science is advancing, isn't it?



That's perfect! We have a demonstration facility on the factory grounds where we can learn about AI visualization.

I'm going to Takasago Machinery Works\* for the first time to discuss a product under development.

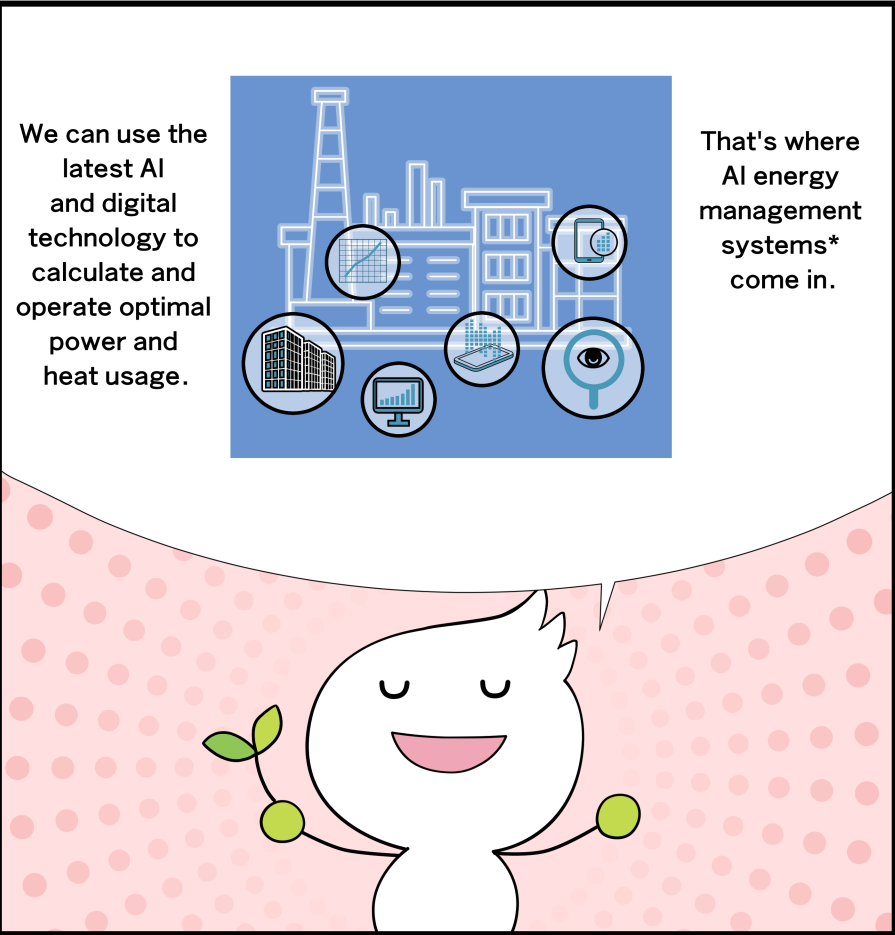
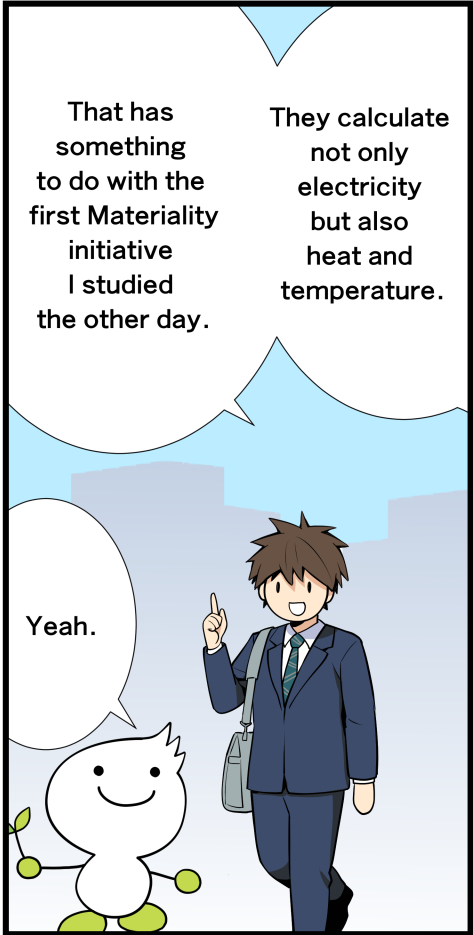
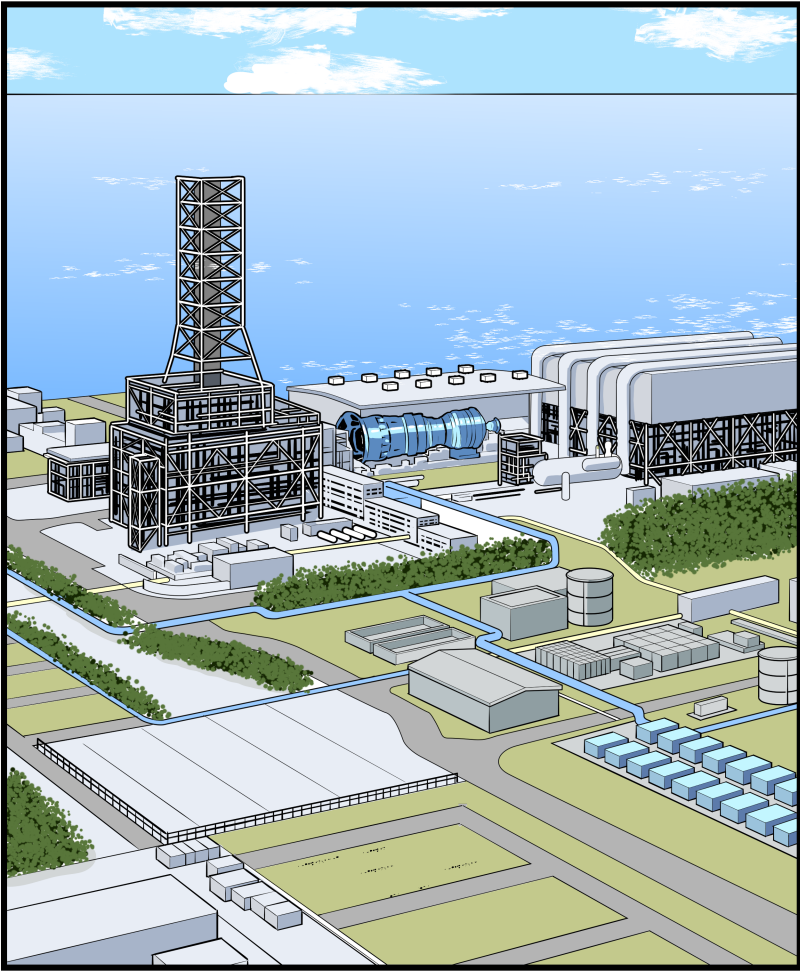
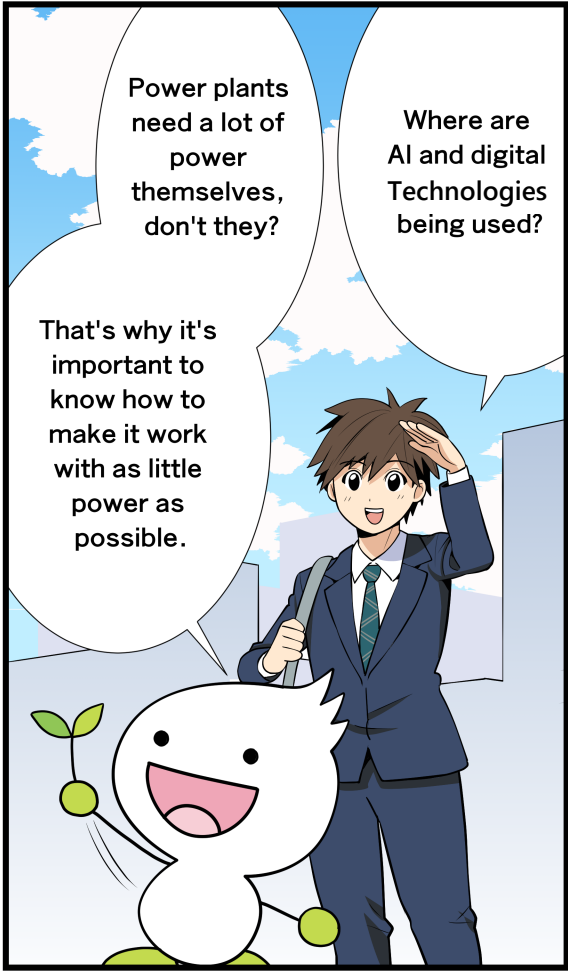


By the way, where are you going today?

Sure!

You know that the driverless Yurikamome we're riding in is also built by the Mitsubishi Heavy Industries Group, right?

\*one of our company factories in Takasago, Hyogo-ken



\*Energy Management System (EMS): A system that uses information and communication technology to monitor, manage, and optimize the use of energy (electricity, gas, etc.) in homes, office buildings, and factories in real time to reduce CO2 emissions.

On the other hand, we have a variety of social issues today.

declining birthrate and aging population

Response to infectious diseases

widening wealth gap

With the increasing use of AI and digitization, everyday life is changing a lot.

AI  
AI analysis

contactless payment

online application

We're driving AI and digitization through a variety of products.

That's impressive.

To help solve such social problems, Mitsubishi Heavy Industries Group is developing a solution called "Σ SynX" (Sigma SynX), which uses digital technology to connect various machinery systems for optimal operation.

② Contribute to a sustainable society through future-oriented energy management strategies that use AI and digitalization to appropriately and efficiently manage power supply and demand

We have three company-wide goals.

① Expand lineup of useful and sustainable AI/digital products meeting needs of customers and users

③ Improve our working environment to produce creative products

# energy management system

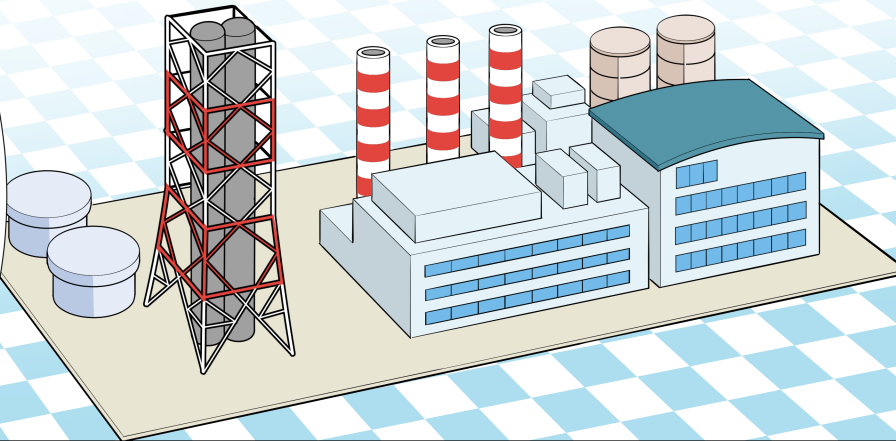


For example, doing like this.

What exactly do we do?



By visualizing the availability of production facilities and energy consumption, we are making power plant operations efficient and easy to work in.

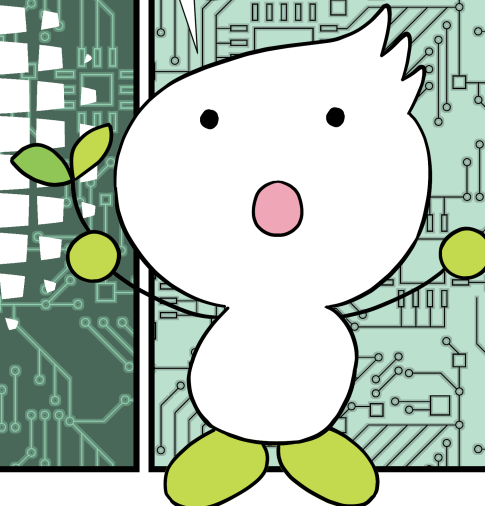


Providing energy solutions utilizing proprietary AI and IoT technologies

Using various data, it helps to operate equipment efficiently and improve maintenance efficiency.

TOMONI®, it's about a solution that uses advanced control, artificial intelligence, machine learning and multi-layered cybersecurity to keep power plants running efficiently.

DX conversion of products and services through application of AI and digital solutions such as TOMONI®



It's a new foundation that extends the management functions of heat source equipment to carbon-neutral EMS (energy management system) technology.

**Carbon neutral EMS** + **EMS base system** = **Started EMS infrastructure system development**

At the Takasago Hydrogen Park, we will also aim to optimize various types of energy using TOMONI®.

**Takasago Hydrogen Park**

[Workplace]

Launched an internal community website where employees can disseminate information and exchange ideas

## Creating a creative workplace

As a creative environment, we are implementing the following.

[Productivity]

Started providing data visualization tools within the company with the aim of increasing productivity with digital technology

[Education]

Enhance employee education and conduct DX literacy training and online seminars on service business expansion and DX implementation

